



## CAPABILITY STATEMENT



Australia's Leading Metal Bellows Manufacturer

☎ (02) 9457 7530


✉ [sales@aflex.com.au](mailto:sales@aflex.com.au)

🌐 [www.aflex.com.au](http://www.aflex.com.au)

📍 Units 14-17, 12-14 Beaumont Road, Mount Kuring-gai NSW 2080







# COMPANY OVERVIEW

**Aflex is a proudly Australian-owned manufacturer of high-performance metal expansion joints.**

Aflex Pty Ltd (formerly Axial Dynamics) was established in 1998 with the vision of supplying quality metal bellows solutions that support long-term performance. With over 25 years of experience, we have earned a reputation for engineering precision, technical expertise, and exceptional client service across all industries, plant and equipment.

Operating from our purpose-built facility in the outer suburbs of northern Sydney, Aflex specialises in the design and manufacture of metal expansion joints, and custom bellows tailored to specific requirements. We also provide engineering and technical support through design, drafting, analysis, pressure testing, and QA/QC documentation, as well as replacement and retrofit solutions for ageing assets or urgent repairs.

Aflex manufactures certified, Australian-made expansion joint solutions for critical infrastructure sectors across Australia. Our products are trusted by clients in water and wastewater infrastructure, power generation (including thermal and renewables), oil and gas, defence (including shipbuilding and facilities), data centres, and a wide range of process industries and engineering services.







# WHY CHOOSE AFLEX

## Reliable. Responsive. Proven.

Aflex is the trusted choice for our clients who demand reliability, responsive service, and fully traceable, engineering-led solutions.



### EFFICIENT SYSTEMS, FASTER LEAD TIMES

Our fully digital, ISO-certified manufacturing system is built for speed and accuracy. Compared to our competitors, Aflex offers significantly shorter technical lead times – without compromising on quality. This efficiency allows our clients to stay ahead of schedule and respond quickly to evolving project needs.



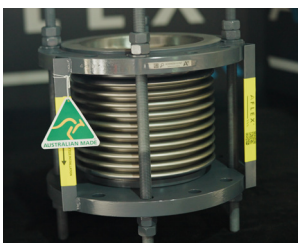
### FULL TRACEABILITY WITH EVERY ORDER

Every product manufactured by Aflex comes with complete traceability across the production lifecycle. Each and every assembly is delivered with a digitally generated Manufacturer Data Report (MDR), including assembly data sheets, master drawings, bellows calculations, weld maps, material maps and material certificates.



### ENGINEERING-LED, TRUSTED ACROSS SECTORS

Every project is overseen by experienced engineers who understand the technical and operational demands of infrastructure. From water and energy to defence and transport, Aflex is trusted by asset owners and contractors to deliver fit-for-purpose, fully documented solutions.



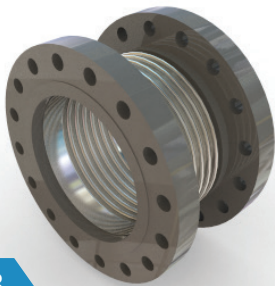
### PROUDLY AUSTRALIAN-OWNED & CERTIFIED

Aflex is 100% Australian-owned, with all design and manufacturing carried out at our ISO 9001:2015 certified facility in Sydney. We support local industry, maintain full control over quality, and offer solutions built specifically for Australian conditions and standards.

# CORE PRODUCTS

## Precision expansion joint solutions engineered in Australia

Aflex offers a comprehensive range of metallic expansion joints and bellows assemblies, engineered to manage movement, vibration, and thermal stress across critical systems. All products are custom-built at our manufacturing facility in Sydney to meet project-specific requirements.

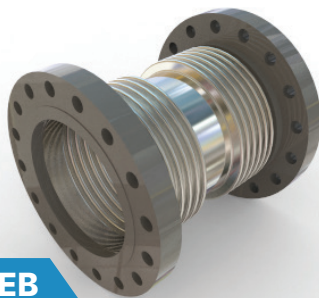


**SEB**

### SINGLE EXPANSION BELLOWS

Single unrestrained expansion bellows. This assembly type allows some flexibility in all planes.

**Applications:** Air ducts, exhaust pipes, steam lines, any application where thrust is restrained by the pipeline

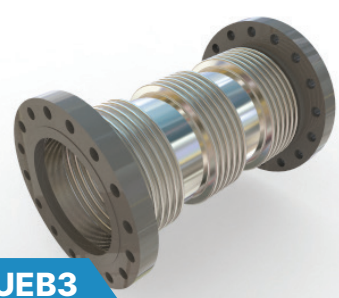


**UEB**

### UNIVERSAL EXPANSION BELLOWS

An unrestrained 'double bellows' assembly, that allows significant flexibility in all planes.

**Applications:** Air ducts, exhaust pipes, any application where thrust is restrained by the pipeline



**UEB3**

### TRIPLE EXPANSION BELLOWS

A highly flexible bellows assembly allowing large offsets for low pressure applications.

**Applications:** Air ducts, exhaust pipes, any application where thrust is restrained by the pipeline

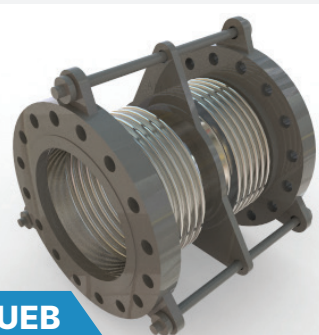


**TEB**

### TIED EXPANSION BELLOWS

Single restrained expansion bellows allowing low range lateral flexibility. Axial flexibility for compression in special cases only.

**Applications:** Pump connections, water pipes, steam pipes



**TUEB**

### TIED UNIVERSAL EXPANSION BELLOWS

A restrained, universal bellows assembly, allowing significant lateral flexibility.

**Applications:** Steam, process and water pipes



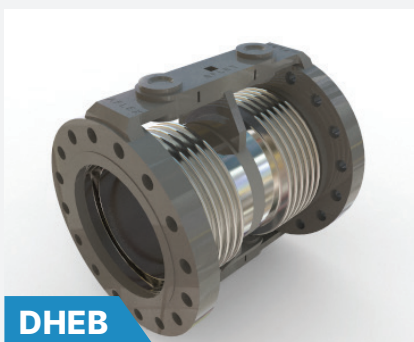
**HEB**

### HINGED EXPANSION BELLOWS

A restrained single expansion bellows, allowing only angular flexibility in a single plane.

**Applications:** All types of high pressure piping



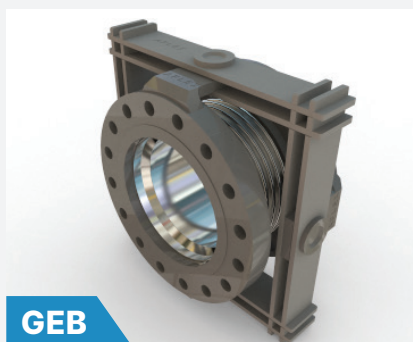


**DHEB**

### DOUBLE HINGED EXPANSION BELLOWS

A restrained double bellows assembly, allowing only lateral flexibility in a single plane. Used as part of an engineered pipeline movement solution.

**Applications:** All types of high pressure piping

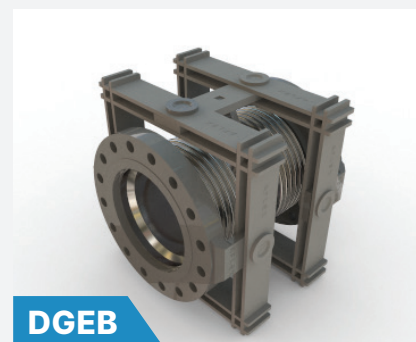


**GEB**

### GIMBAL EXPANSION BELLOWS

A restrained single expansion bellows assembly, allowing only angular flexibility on two planes simultaneously. Used as part of an engineered pipeline movement solution.

**Applications:** All types of high pressure piping

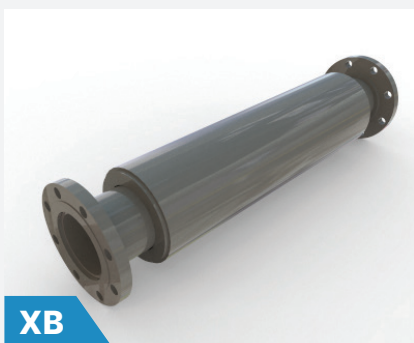


**DGEb**

### DOUBLE GIMBAL EXPANSION BELLOWS

A restrained double bellows assembly, allowing lateral flexibility in two planes simultaneously. Used as part of an engineered pipeline movement solution.

**Applications:** All types of high pressure piping

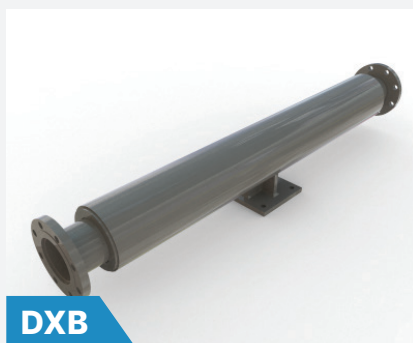


**XB**

### EXTERNALLY PRESSURISED BELLOWS ASSEMBLY

A single element externally pressurised bellows assembly, allowing large axial flexibility (no lateral or angular flexibility).

**Applications:** All types of piping where thrust forces are restrained



**DXB**

### DOUBLE EXTERNALLY PRESSURISED BELLOWS ASSEMBLY

A double element externally pressurised bellows assembly allowing very large axial flexibility (no lateral or angular flexibility).

**Applications:** All types of piping where thrust forces are restrained



**PANTO**

### PANTOGRAPH BELLOWS ASSEMBLY

A multi element bellows assembly allowing very large axial flexibility while evenly distributing the movement between all bellows elements.

**Applications:** All types of piping applications requiring large axial movements. Common on bridges and drainage lines.

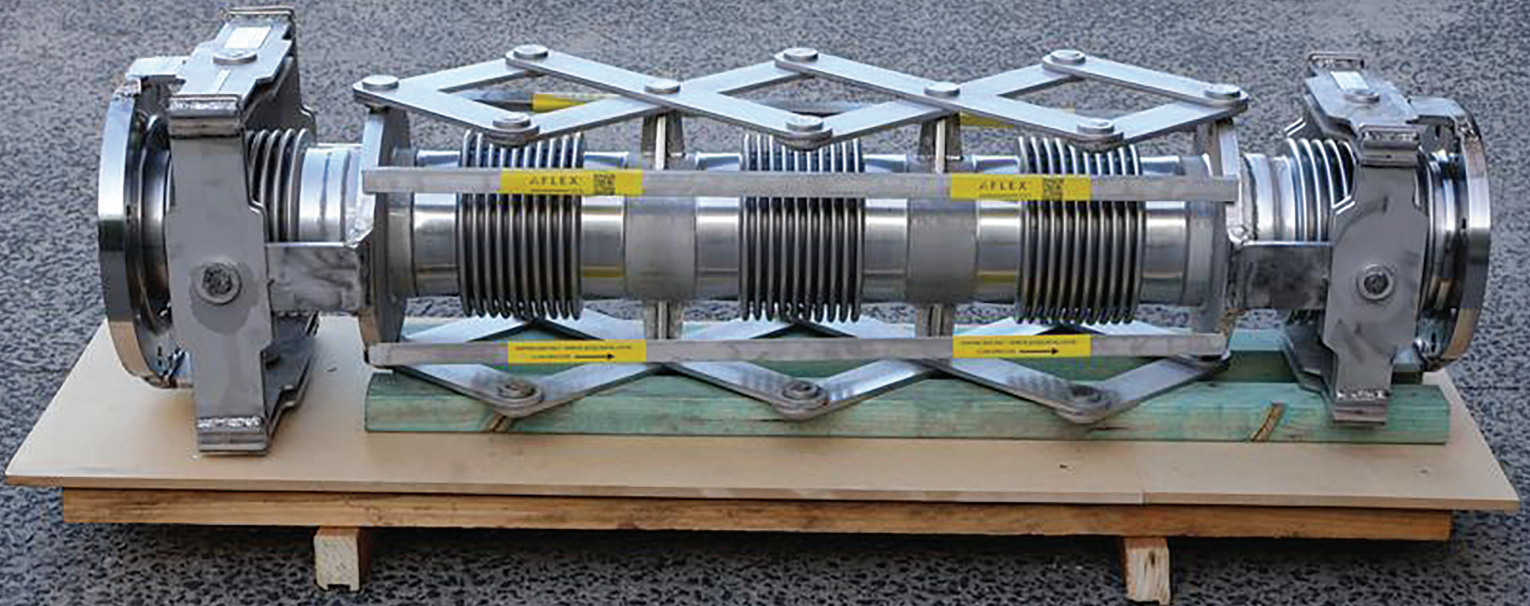


# PRODUCT SHOWCASE:

## 150NB GEB~PANTOGRAPH

### PRODUCT FEATURES

- Large axial movements in a controlled hardware arrangement, coupled with end GEB gimbals for high lateral movements.
- Adapts to high levels of seismic movement in buildings, bridges and associated civil applications
- Controlled Multi-Directional Movement-also used where high movements are present in 3 planes
- Accommodates complex alignment tolerances during site installation.



## CERTIFICATIONS, ACCREDITATIONS & COMPLIANCE

Aflex operates under rigorous management systems and holds key certifications, accreditations and compliance.

- ISO 9001 Quality Management System
- ISO 45001 Occupational Health and Safety Management System
- ASSDA accredited (Australian Stainless Steel Development Association), IAF (International Accreditation Forum) and JASANZ (Joint Accreditation System of Australia and New Zealand)
- AS and ASME certified welding procedures and welder qualifications
- JOSCAR-AU Registered Supplier – recognised for meeting Defence and Aerospace industry procurement requirements





# POLICIES & COMMITMENTS

Aflex follows strict health, safety, environmental, and quality policies across all operations – and we expect the same of our suppliers, contractors, and partners, as outlined in our Supplier Code of Conduct.

## HEALTH & SAFETY

Aflex maintains a strong safety culture, ensuring safe working environments across all operations. All staff are trained to understand and follow the health and safety policies, standards, and procedures relevant to their roles. Our approach is underpinned by the ISO 45001 Occupational Health and Safety Management System, supporting ongoing improvement in workplace safety and performance.

## ENVIRONMENTAL STEWARDSHIP

We prioritise sustainability by designing long-lasting components and reducing waste through durable manufacturing practices. We are committed to reducing the environmental impacts associated with our operations, with a focus on lowering waste, energy, fuel use, and water consumption where practical. We promote the efficient use of sustainable materials and pursue greenhouse gas reduction initiatives.

## QUALITY MANAGEMENT

We follow strict quality control procedures, supported by a robust, ISO 9001 certified Quality Management System and comprehensive documentation on all projects. This ensures our products are consistently manufactured to the highest standards, with full traceability and third-party compliance where required.

## COMMUNITY ENGAGEMENT




As a 100% Australian-owned manufacturer, we support local employment, collaborate with regional suppliers, and actively contribute to the domestic engineering sector.



**Australian owned,  
designed and manufactured**





-  (02) 9457 7530
-  [sales@aflex.com.au](mailto:sales@aflex.com.au)
-  [www.aflex.com.au](http://www.aflex.com.au)
-  Units 14–17, 12–14 Beaumont Road,  
Mount Kuring-gai NSW 2080

