

# AFLEX<sup>®</sup>

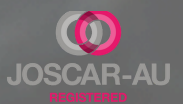


# PRODUCT

Aflex Bellows Assemblies

# DXB

DOUBLE EXTERNALLY PRESSURISED BELLOWS  
ASSEMBLY

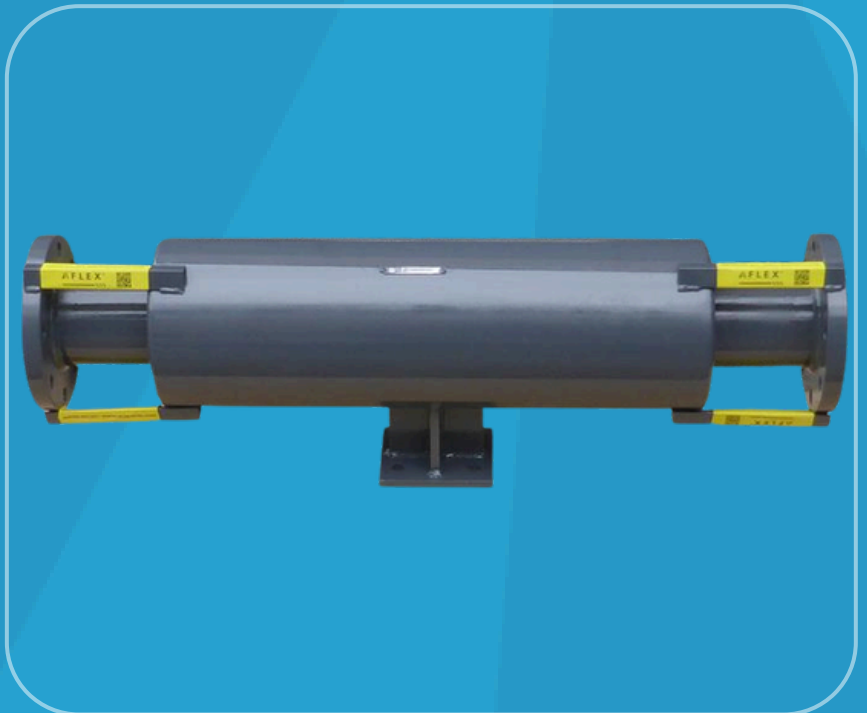


An Aflex Double Externally Pressurised Bellows Assembly (DXB) is similar to the XB assembly but allows for more axial movement. DXB assemblies utilise two bellows elements with an Intermediate Anchor to ensure the axial movement is distributed equally over both bellows.

The Aflex DXB is designed so that the pressure is applied externally to the bellows elements, which means the inside of the bellows remains at atmospheric pressure. With this design, when a pipeline expands, the DXB expansion joint compresses, stretching the bellows element. This allows for a large amount of axial movement as the bellows is completely stable due to the pressure being applied externally, not internally.



DXB assemblies are unrestrained, and will transmit pressure thrust onto the pipeline, therefore, it must be properly restrained by anchors and pipe guides to prevent damage to the pipeline and other equipment.

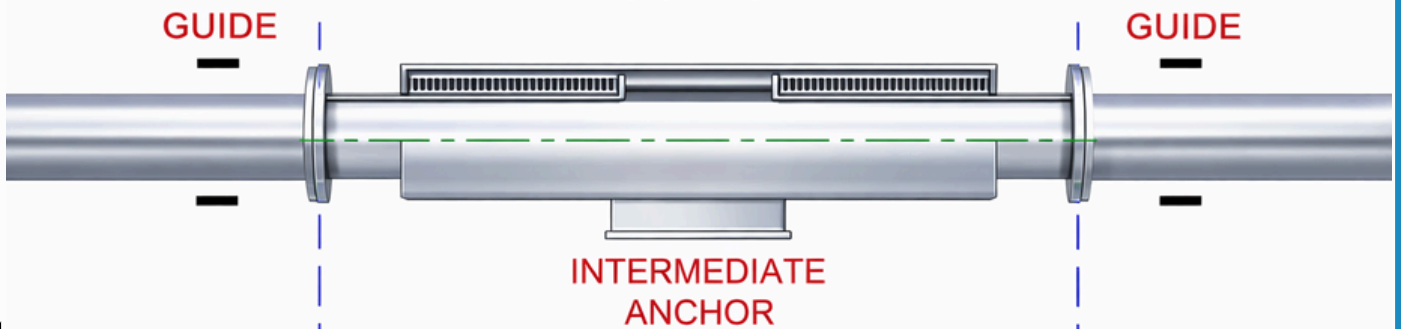


## DXB – Double Externally Pressurised Bellows Assembly

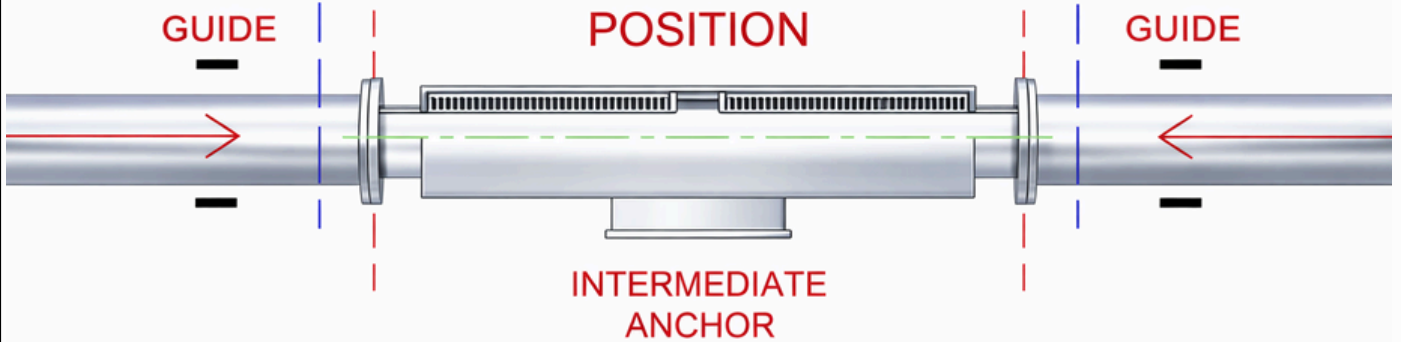
Applications	Common Pressure
Steam lines	1000kPa
Water lines	1600kPa
Data Centre piping	1400kPa
Cooling lines	1000-1600kPa
Heating lines	1000-1600kPa



## COLD POSITION



## HOT POSITION



EXPLORE MORE  
PRODUCT GALLERY



# AFLEX®

---

- ☎ (02) 9457 7530
- ✉ [sales@aflex.com.au](mailto:sales@aflex.com.au)
- 🌐 [www.aflex.com.au](http://www.aflex.com.au)
- 📍 Units 14-17, 12-14 Beaumont Road,  
Mount Kuring-gai NSW 2080

